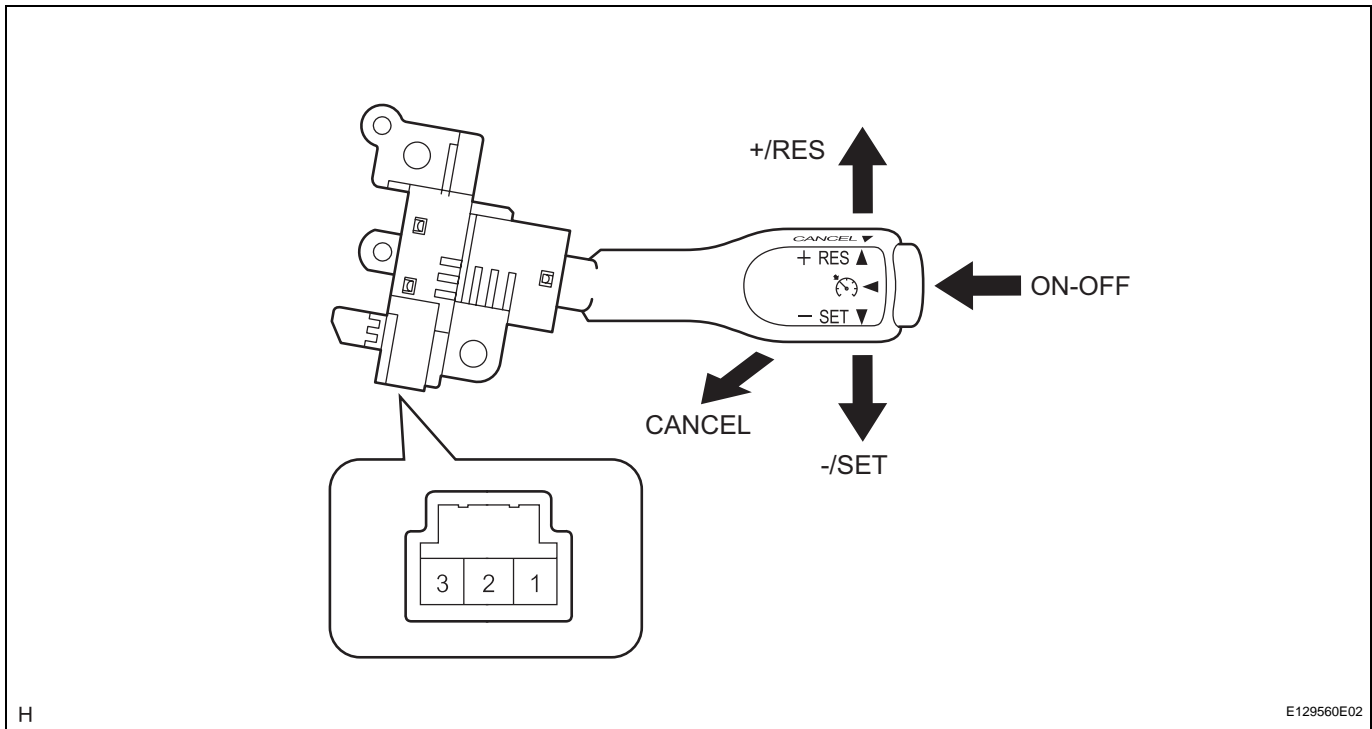


INSPECTION

1. INSPECT CRUISE CONTROL MAIN SWITCH



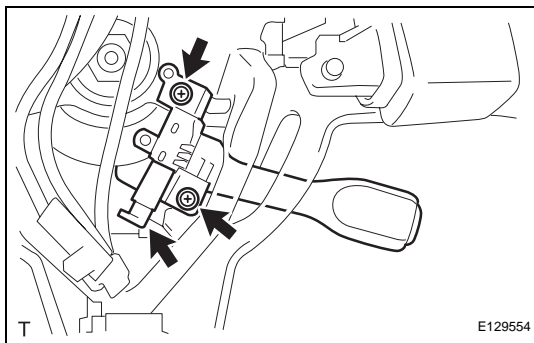
(a) Measure the resistance and check the results in accordance with the value(s) in the table below.

Standard resistance

Tester Connection	Switch Condition	Specified Condition
1(ECC) - 3(CCS)	Neutral	10 kΩ or higher
1(ECC) - 3(CCS)	+/RES	216 to 264 Ω
1(ECC) - 3(CCS)	-/SET	567 to 693 Ω
1(ECC) - 3(CCS)	CANCEL	1,386 to 1,694 Ω
1(ECC) - 3(CCS)	Main Switch off	10 kΩ or higher
1(ECC) - 3(CCS)	Main Switch on	Below 1 Ω

If the result is not as specified, replace the cruise control main switch.

INSTALLATION



1. INSTALL CRUISE CONTROL MAIN SWITCH

(a) Install the cruise control main switch with the 2 screws.

Torque: 2.4 N*m (24 kgf*cm, 21 in.*lbf)

(b) Connect the connector.

2. INSTALL STEERING PAD (See page RS-346)

3. INSTALL NO. 3 LOWER STEERING WHEEL COVER (See page RS-347)

4. INSTALL NO. 2 LOWER STEERING WHEEL COVER (See page RS-347)

5. CONNECT CABLE TO NEGATIVE BATTERY TERMINAL

Torque: 3.9 N*m (40 kgf*cm, 35 in.*lbf)

-
6. **INSPECT SRS WARNING LIGHT**
(See page [RS-29](#))